

NA032603.V2

NEO MODULAR ENCLOSURE-BAYING SYSTEM



www.tekpan.com





NEO MODULAR ENCLOSURE BAYING SYSTEM

Single Door : NEMA 12, NEMA 3R with Option



NEO MODULAR ENCLOSURE BAYING SYSTEM

Double Door : NEMA 12



NEO MODULAR ENCLOSURE - BAYING SYSTEM

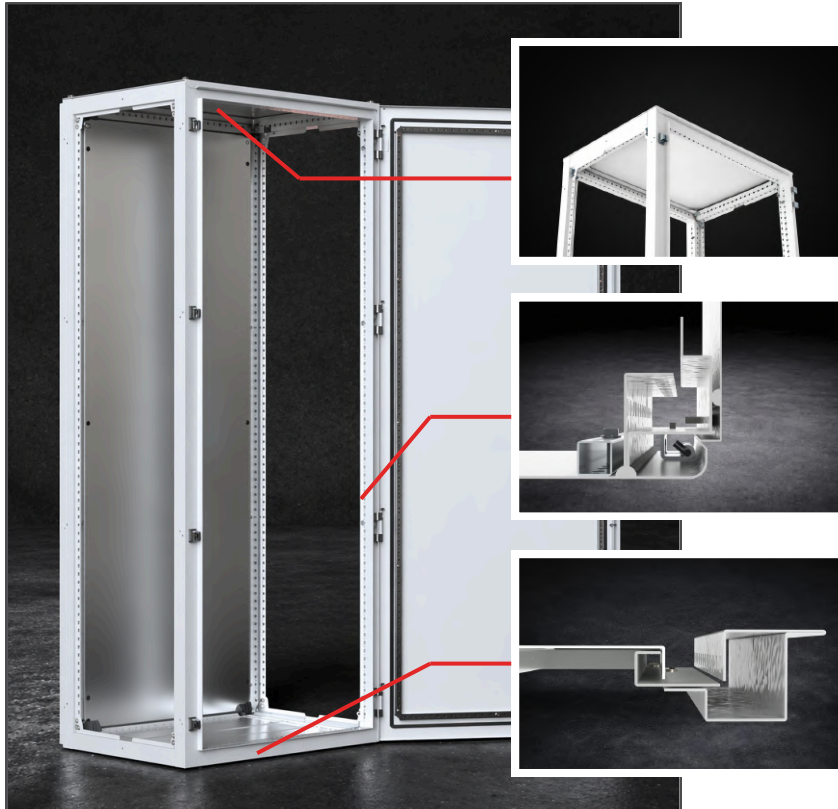
FLAT PACK SYSTEM

Offered as a flat-pack solution, the NEO series is designed for fast and easy assembly in a minimal amount of time. It also saves space during transportation and storage.

You can access
the NEO Modular assembly video
by [Click Here](#)



SEALED AGAINST DUST, DIRT and WATER SPRAY , UP TO IP55 / NEMA 12



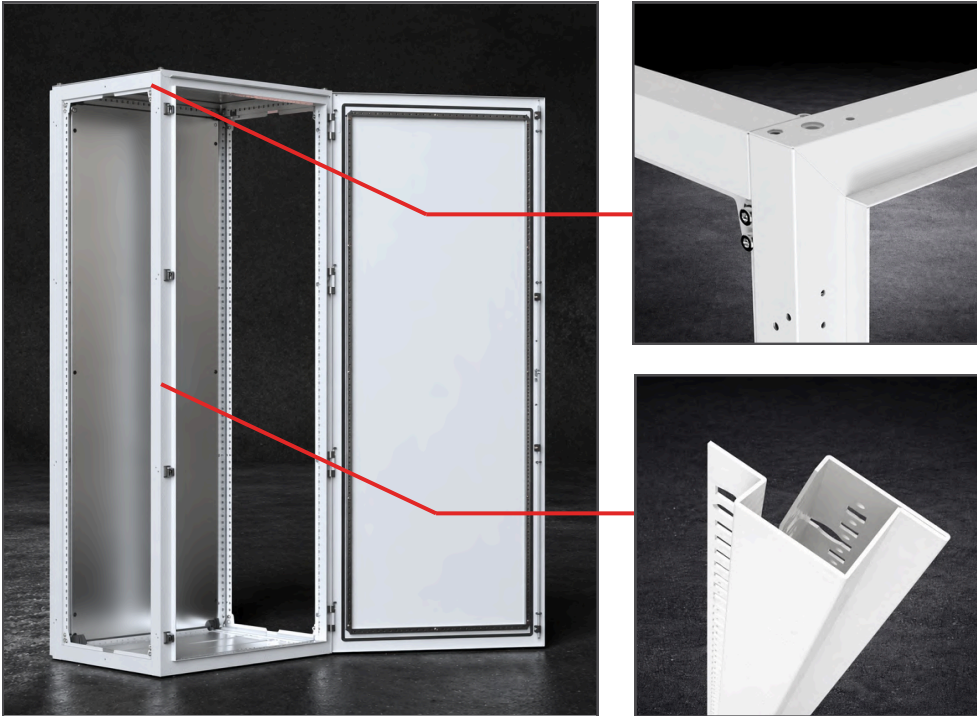
Sealing foam gaskets are used on the body door, back door, side panels and top panels of the enclosure. This gasket enables complete isolation between -40 and +100 C

All gaskets apply pressure on the convex frame curves. Dust and water particles are left in the space between the convex curves, and thus pressure on the gasket is prevented.

All seal applications on the covers press on the convex curves in the carcasses. Dust and water droplets are left in the area between these convex curves and the pressure on the seal is prevented.

NEO MODULAR ENCLOSURE - BAYING SYSTEM

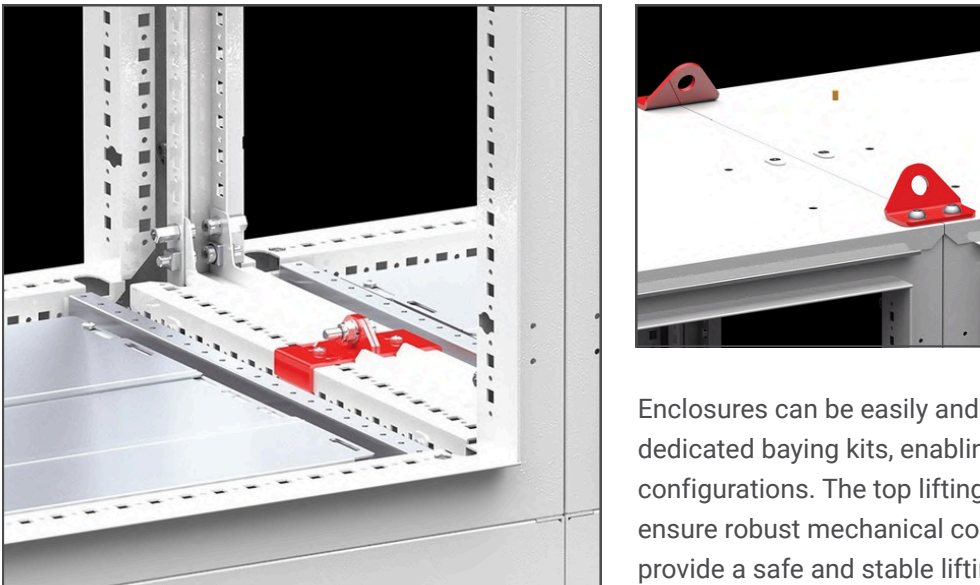
HIGH STATIC LOAD-BEARING FRAME STRUCTURE



The NEO modular body structure features a high-rigidity frame system formed by welding double-folded profiles using precision welding technology.

This frame structure is modularly assembled with depth members, creating a body that delivers superior strength and maximum structural stability.

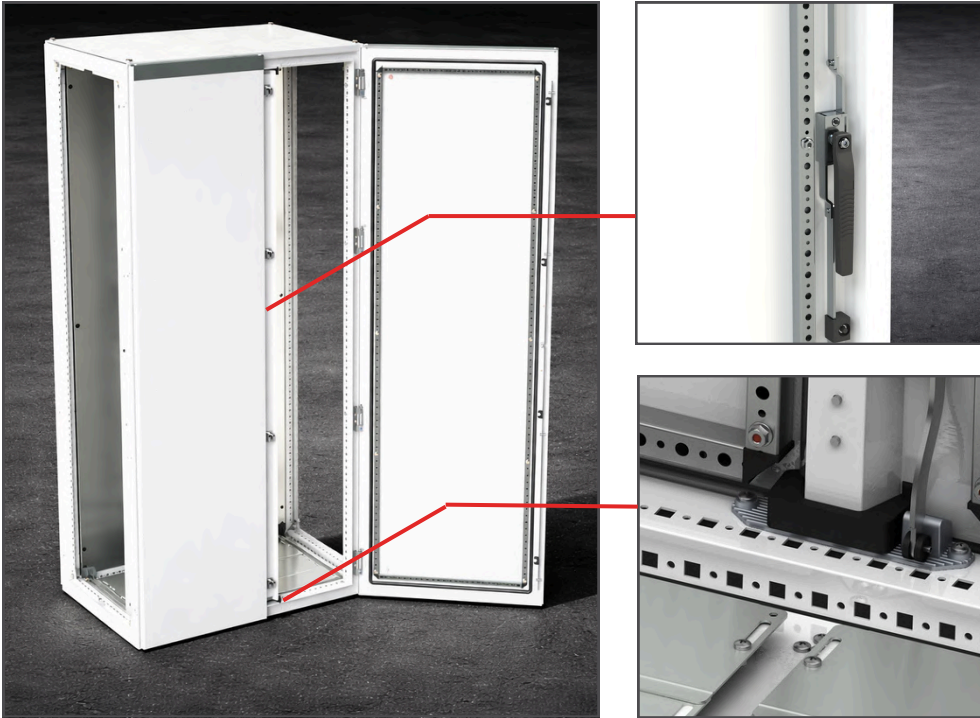
BAYING THE ENCLOSURES and MODULARITY



Enclosures can be easily and securely joined internally using dedicated baying kits, enabling side-by-side modular configurations. The top lifting brackets included in the kit not only ensure robust mechanical coupling between enclosures, but also provide a safe and stable lifting position for crane handling.

NEO MODULAR ENCLOSURE - BAYING SYSTEM

SECURE INTERNAL LOCKING SYSTEM FOR DOUBLE DOOR ENCLOSURES



In double door enclosures, one door is fixed by means of an internal half-handle mechanism with two-point locking. The second door is then secured onto the first door with a four-point locking system, creating a highly secure locking arrangement. This configuration enhances long-term protection of the enclosure against dust and liquid ingress.

LINEAR MOTION 4-POINT LOCKING SYSTEM



The linear motion locking mechanism provides simple yet highly effective four-point locking of the doors. This system ensures uniform pressure distribution across the gasket surfaces, enabling long-term sealing performance and reliable protection.

NEO MODULAR ENCLASURE - FLAT PACK ORDERING CODES



- * Floor-Free standing, modular enclosures (suitable for side-by-side combination) -Indoor type , Outdoor with Option (a)
- * Single Door , Double Door versions
- * Standards Compliance: UL 50E and IEC 62208
- * Protection Ratings: Single Door: UL/cUL Type 1 , 12 - (Nema 3R with option) UL File Number E352599 / IP55 (IEC 60 529)
Double Door: UL/cUL Type 1 , 12 - UL File Number E352599 / IP54 (IEC 60 529)



- * Corrosion Resistance: C3-M according to EN ISO 12944-2
- * Impact Protection: IK10 according to IEC EN 60529

*** Single Doors:**

130° right hand hinged door (reverse is possible) , 4-point latching tool-to-open liner handle with 5mm double-bit insert

*** Double Doors:**

130° right hand hinged double doors , 4-point latching tool-to-open liner handle with 5mm double-bit insert to open right door , 2-point latching tool with inner handle to open left door

Materials:

Door(s) 1,5mm-2,0mm , rear wall and roof 1,2mm: DC-01 Carbon Steel
Frame 1,5mm, gland plates 1,5mm, Mounting Panel 3mm: DX51 Galvanized Steel

Surface Finish:

Frame, door(s), rear wall, roof: Nano coating primed, RAL 7035 Light Gray with textured powder coated

Supply Includes:

Modular flat-pack enclosure pack selection (see "Sizes/Order Codes" for details)

Options:

Plinth, side walls, baying kit, and other accessories

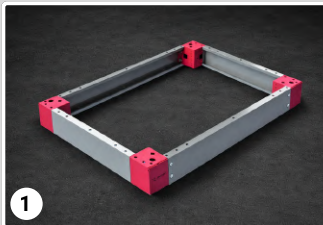
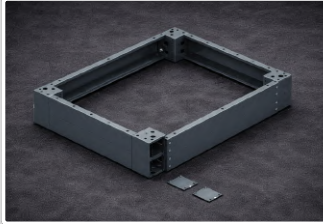
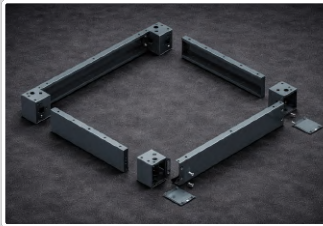
(a): For outdoor applications with NEMA 3R ratings, Outdoor Canopy and Outdoor Side walls are required. Installation locations must comply with C3-M corrosion level according to EN ISO 12944-2

NEO MODULAR ENCLASURE - FLAT PACK ORDERING CODES



Enclosure Size

Height (H)	Width (W)	Depth (D)	Door(s)	Main Body Group	Depth Group	Roof Plate	Gland Plates	Mounting Panel	M.Panel Size HxW
2000mm (78.7")	400mm (15.7")	600mm (23.6")	1	614.201	620.601	624.600	634.600	707.420	1888x288mm (74.3"x11.3")
2000mm (78.7")	600mm (23.6")	600mm (23.6")	1	616.201	620.601	626.600	636.600	707.620	1888x488mm (74.3"x19.2")
2000mm (78.7")	800mm (31.5")	600mm (23.6")	1	618.201	620.601	628.600	638.600	707.820	1888x688mm (74.3"x27.1")
2000mm (78.7")	600mm (23.6")	800mm (31.5")	1	616.201	620.801	626.800	636.800	707.620	1888x488mm (74.3"x19.2")
2000mm (78.7")	800mm (31.5")	800mm (31.5")	1	618.201	620.801	628.800	638.800	707.820	1888x688mm (74.3"x27.1")
2000mm (78.7")	1000mm (39.4")	600mm (23.6")	2	610.201	620.601	621.600	631.600	707.020	1888x888mm (74.3"x35.0")
2000mm (78.7")	1200mm (47.2")	600mm (23.6")	2	612.201	620.601	622.600	632.600	707.220	1888x1088mm (74.3"x42.8")
2000mm (78.7")	1000mm (39.4")	800mm (31.5")	2	610.201	620.801	621.800	631.800	707.020	1888x888mm (74.3"x35.0")
2000mm (78.7")	1200mm (47.2")	800mm (31.5")	2	612.201	620.801	622.800	632.800	707.220	1888x1088mm (74.3"x42.8")



Modular Plinth System

	Product Code	Description
1	708.100	Plinth Corners ,H:100mm(3.94") , PU:4
1	708.200	Plinth Corners ,H:200mm(7.88") , PU:4
2	709.140	Plinth Front&Rear Covers,H:100mm(3.94") , W:400mm(15.7") , PU:2
2	709.160	Plinth Front&Rear Covers,H:100mm(3.94") , W:600mm(23.6") , PU:2
2	709.180	Plinth Front&Rear Covers,H:100mm(3.94") , W:800mm(31.5") , PU:2
2	709.100	Plinth Front&Rear Covers,H:100mm(3.94") , W:1000mm(39.4") , PU:2
2	709.120	Plinth Front&Rear Covers,H:100mm(3.94") , W:1200mm(47.2") , PU:2
3	710.160	Plinth Side Covers,H:100mm(3.94") , D:600mm(23.6") , PU:2
3	710.180	Plinth Side Covers,H:100mm(3.94") , D:800mm(31.5") , PU:2

Material

Corners , Covers : DX51 galvanized sheet steel
Plastic Covers with corners: RAL 7012 ABS

Surface Finish

Corners , Covers : Nano-coating pre-treatment with RAL 7012 powder coating

Supply Includes

Corners : 4 modular plinth corner pieces , 4 plastic covers and mounting accessories
Covers : 2 covers and mounting accessories

Required

For 200 mm plinth height selection, 2 sets front& rear and side covers are required.

NEO Modular Side Walls

	Product Code	Description
4	632.206	NEO Modular Side Walls , HD : 2000x600mm(78.7"x 23.6") , PU:2
4	632.208	NEO Modular Side Walls , HD : 2000x800mm(78.7"x 31.5") , PU:2

Material

DC01 sheet steel

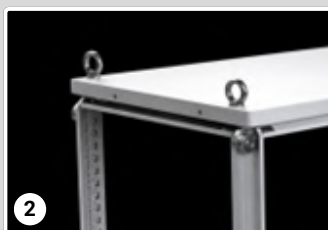
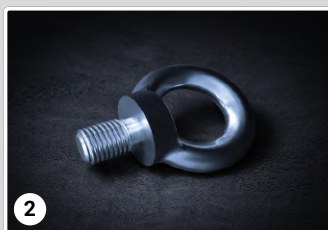
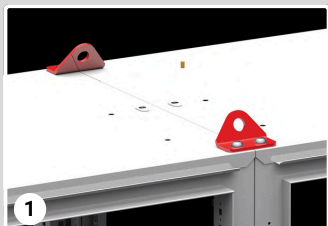
Surface Finish

Nano-coating pre-treatment with RAL 7035 powder coating

Supply Includes

2 side walls and enclosure mounting accessories

Fixing and Transportation



	Product Code	Description
1	611.000	NEO Modular Baying Kit

Baying Kit :

Consists of the components required for side-by-side

Material

DC01 sheet steel

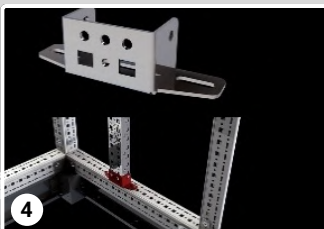
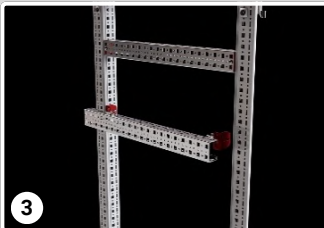
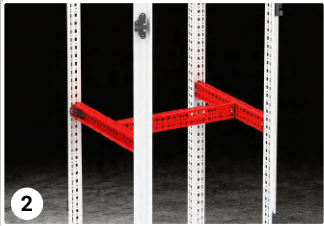
Surface Finish

Zinc plated

Supply Includes

2 double lifting brackets, 8 pcs M6 screws and nuts for vertical internal fixing, 2 depth adjustment brackets , 5.6 m enclosure coupling gasket, Mounting bolts

	Product Code	Description
2	612.000	Eyebolts , M12x30 , PU:4



Mounting Panel Spacer

	Product Code	Description
1	712.200	Mounting Panel Spacer , H:2000mm(78.7")

Mounting Rails 50x25mm section (Zinc-Plated)

	Product Code	Description
2	944.424	W/D : 600mm (23.6") PU:2
2	944.425	W/D : 800mm (31.5"), PU:2
2	944.426	W/D : 1000mm (39.4"), PU:2
2	944.430	H : 2000mm (78.7"), PU:4

Required: 2 fixing brackets are required for each cross rail.

Mounting Rails 50x25mm section (Pre-Galvanized)

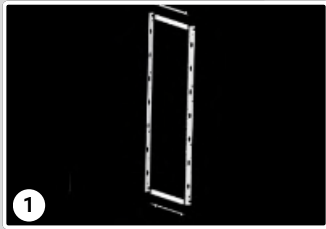
	Product Code	Description
2	944.522	W/D : 400mm (15.7") PU:2
2	944.524	W/D : 600mm (23.6") PU:2
2	944.525	W/D : 800mm (31.5"), PU:2
2	944.526	W/D : 1000mm (39.4"), PU:2
2	944.527	W/D : 1200mm (47.2"), PU:2
2	944.528	H : 1600mm (63"), PU:2
2	944.530	H : 2000mm(78.7"), PU:4

Required: 2 fixing brackets are required for each cross rail.

Fixing Brackets for Mounting Rails 50x25mm section

	Product Code	Description
3	944.420	Snap-fit Brackets for Rail 50x25mm , PU:100
3	944.421	Snap-fit Brackets for Rail 50x25mm , PU:12
4	944.433	T-Type Brackets for Rail 50x25mm , PU:4
5	944.434	L- Type Brackets for Rail 50x25mm , PU:4

T-Type & L-Type Brackets: With its 25 mm slotted hole design, it provides flexible adjustment along the mounting axis for 50x25 mm mounting rails.



Cover Plate Frame Set

	Product Code	Description
1	953.402	HW : 2000x400mm (78.7"x 15.7") , Net Height : 1800mm (70.87")
1	953.406	HW : 2000x600mm (78.7"x 23.6") , Net Height : 1800mm (70.87")
1	953.412	HW : 2000x800mm (78.7"x 31.5") , Net Height : 1800mm (70.87")

Full plate (Swing Panel)

	Product Code	Description
2	713.420	HW : 2000x400mm (78.7"x 15.7")
2	713.620	HW : 2000x600mm (78.7"x 23.6")
2	713.820	HW : 2000x800mm (78.7"x 31.5")

Note: Provides IP3XC protection according to IEC EN 60529.

Required: For installation inside the enclosure, 1 Cover Plate Frameset matching the enclosure height and width is required.

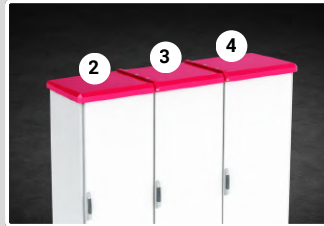
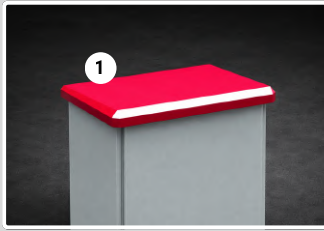
Partial Cover Plates (Hinged)

	Product Code	Description
3	954.415	Enclosure W:400mm(15.7") , Plate Height:150mm(5.91") , Solid Type
3	954.430	Enclosure W:400mm(15.7") , Plate Height:300mm(11.81") , Solid Type
3	954.440	Enclosure W:400mm(15.7") , Plate Height:400mm(15.7") , Solid Type
3	954.460	Enclosure W:400mm(15.7") , Plate Height:600mm(23.6") , Solid Type
3	954.615	Enclosure W:600mm(23.6") , Plate Height:150mm(5.91") , Solid Type
3	954.630	Enclosure W:600mm(23.6") , Plate Height:300mm(11.81") , Solid Type
3	954.640	Enclosure W:600mm(23.6") , Plate Height:400mm(15.7") , Solid Type
3	954.660	Enclosure W:600mm(23.6") , Plate Height:600mm(23.6") , Solid Type
3	954.815	Enclosure W:800mm(31.5") , Plate Height:150mm(5.91") , Solid Type
3	954.830	Enclosure W:800mm(31.5") , Plate Height:300mm(11.81") , Solid Type
3	954.840	Enclosure W:800mm(31.5") , Plate Height:400mm(15.7") , Solid Type
3	954.860	Enclosure W:800mm(31.5") , Plate Height:600mm(23.6") , Solid Type

Note: Provides IP3XC protection according to IEC EN 60529.

Required: For installation inside the enclosure, 1 Cover Plate Frameset matching the enclosure height and width is required.

Attention: When selecting partial cover plates, the net internal height of the frame must be taken into consideration related with the cover plates' height placing.



NEO Modular Outdoor Rain Canopies

	Product Code	Description
1	934.266	Single Module , WD : 600x600mm (23.6"x23.6")
2	934.366	Left Module , WD : 600x600mm (23.6"x23.6")
3	934.466	Right Module , WD : 600x600mm (23.6"x23.6")
4	934.566	Middle Module , WD : 600x600mm (23.6"x23.6")
1	934.286	Single Module , WD : 800x600mm (31.5"x23.6")
2	934.386	Left Module , WD : 800x600mm (31.5"x23.6")
3	934.486	Right Module , WD : 800x600mm (31.5"x23.6")
4	934.586	Middle Module , WD : 800x600mm (31.5"x23.6")
1	934.216	Single Module , WD : 1000x600mm (39.4"x23.6")
2	934.316	Left Module , WD : 1000x600mm (39.4"x23.6")
3	934.416	Right Module , WD : 1000x600mm (39.4"x23.6")
4	934.516	Middle Module , WD : 1000x600mm (39.4"x23.6")
1	934.226	Single Module , WD : 1200x600mm (47.2"x23.6")
2	934.326	Left Module , WD : 1200x600mm (47.2"x23.6")
3	934.426	Right Module , WD : 1200x600mm (47.2"x23.6")
4	934.526	Middle Module , WD : 1200x600mm (47.2"x23.6")

Description: IP protection up to IP55 according to IEC EN 60529 / NEMA 3R protection
Corrosion resistance level C3-M according to EN ISO 12944-2

Material

DX51 galvanized sheet steel

Surface Finish

Nano coating with RAL 7035 powder coating

Supply Includes

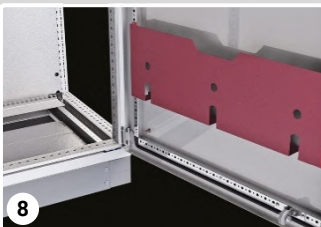
Rain canopy and assembly parts

Notes: For a single enclosure installation, select 1 pc "Single Module" canopy.

For two enclosures joined side by side, select 1 pc "Left Module" and 1 pc "Right Module" canopy.

For three or more enclosures joined side by side, select 1 pc "Left Module", 1 pc "Right Module", and "Middle Module" canopies for the intermediate enclosures

Installation Requirement: For outdoor applications with an Outdoor Rain Canopy, the use of NEO Outdoor Side Walls is mandatory to ensure proper environmental protection and system integrity.



NEO Modular Outdoor Side Walls

	Product Code	Description
5	633.206	HD: 2000x600mm (78.7"x23.6") , PU:2

Description:

IP protection up to IP55 according to IEC EN 60529 / NEMA 3R protection
Corrosion resistance level C3-M according to EN ISO 12944-2

Material: DX51 galvanized sheet steel

Surface Finish: Nano coating with RAL 7035 powder coating

Rain Canopies for Air Filters

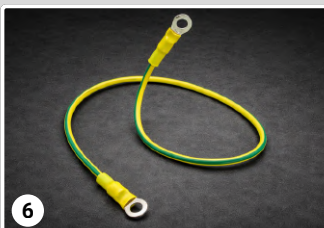
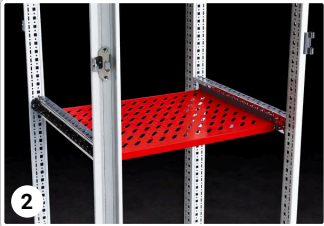
	Product Code	Description
6	983.121	Air Filter with Rain Canopy , Filter :150x150mm
6	983.122	Air Filter with Rain Canopy , Filter :250x250mm
6	983.125	Rain Canopy for Air Filter ,WH:460mmx500mm, without filter

Window Kits

	Product Code	Description
7	973.110	Window Kit , WHD: 210mm(8.26")x210mm(8.26")x75mm(2.95")
7	973.112	Window Kit , WHD: 355mm(13.97")x300mm(11.8")x75mm(2.95")
7	973.114	Window Kit , WHD: 410mm(16.14")x560mm(22.04")x75mm(2.95")

Metal Plan Pockets

	Product Code	Description
8	994.706	Single Door W: 600mm(23.6") , Double Door W: 1200mm(47.2")
8	994.708	Single Door W: 800mm (31.5")



Dividing Panel (NEO)

	Product Code	Description
1	936.206	HW : 2000x600mm (78.7"x 23.6")
1	936.208	HW : 2000x800mm (78.7"x 31.5")

Note: Provides IP3XC protection according to IEC EN 60529 while full placing of cover plates.

Fixed Shelves

	Product Code	Description
2	945.200	WD : 600x600mm (23.6"x 23.6")
2	945.201	WD : 600x800mm (23.6"x 31.5")
2	945.202	WD : 800x600mm (31.5"x 23.6")
2	945.203	WD : 800x800mm (31.5"x 31.5")

Required

For installation inside the enclosure, 2 pieces of 50x25 mm mounting rails matching the enclosure depth are required.

Locking

	Product Code	Description
3	950.118	NEO Linear Handle Lock (Complete Lock) with 5mm Double-bit Insert
4	952.101	Key 5mm Double-bit

Grounding Straps and Braids

	Product Code	Description
5	991.200	Grounding Braid M6 - 12x3x163mm (0.59"x0.12") , PU:10
5	991.201	Grounding Braid M6 - 12x3x260mm (0.59"x0.12") , PU:10
6	991.208	Ground Strap M8 -16mm ² (6AWG) Yellow-Green 210mm(8.26") ,PU:5
6	991.209	Ground Strap M8 -16mm ² (6AWG) Yellow-Green 260mm(10.23") ,PU:5

IP & NEMA ENCLOSURE RATINGS

		INDOOR USE					OUTDOOR USE									
		IP20	IP22	IP53	IP54		IP24		IP55				IP66		IP67	IP68
		NEMA 1	NEMA 2	NEMA 5	NEMA 12/12 K	NEMA 13	NEMA 3R	NEMA 3RX	NEMA 3	NEMA 3X	NEMA 3S	NEMA 3SX	NEMA 4	NEMA 4X	NEMA 6	NEMA 6P
SOLIDS	Incidental Contact	●	●	●	●	●	●	●	●	●	●	●	●	●	●	●
	Falling Dirt	●	●		●	●	●	●	●	●	●	●	●	●	●	●
	Circulating Dust				●	●							●	●	●	●
	Settling Airborne Dust			●	●	●							●	●	●	●
	Windblown Dust								●	●	●	●				
	Lint			●	●	●										
	Fibers			●	●	●										
	Flyings			●	●	●										
LIQUIDS	Falling Rain						●	●	●	●	●	●	●	●	●	●
	Wind-driven Rain							●	●	●	●	●	●	●	●	●
	Snow						●	●	●	●	●	●	●	●	●	●
	Sleet						●	●	●	●	●	●	●	●	●	●
	Ice Laden									●						
	Splashing Water												●	●	●	●
	Hose-directed Water												●	●	●	●
	Temporary Submersion														●	●
	Prolonged Submersion															●
CHEMICALS	Seepage of Non-corrosive Liquids				●	●										
	Spraying Non-corrosive Liquids					●										
	Corrosion						●		●		●		●			●

TEKPAN Products for Harsh Environments



Company Management
System Approval



Canadian and US Standards
and Approval



IEC Product Standards
and Approval



European Standards and
Compliance

TEKPAN CANADA INC.

29 Goertz Ave Stony Plain, Edmonton-Alberta T7Z 0H6 - CANADA

Phone: 780-722-9280 **E-Mail:** info@tekpan.ca **Web:** www.tekpan.ca

