

JUNCTION BOXES and WALL MOUNTED ENCLOSURES

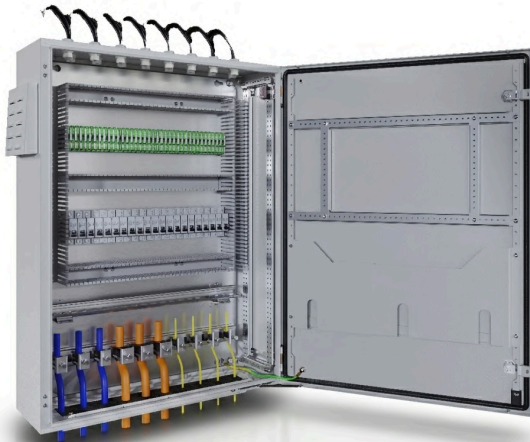


www.tekpan.com





JUNCTION BOXES
NEMA 4



WALL MOUNTED ENCLOSURES
Single Door : NEMA 4



WALL MOUNTED ENCLOSURES
Double Door : NEMA 12



DM COMPACT

- Single Body Construction
- C3-M Corrosion Resistance
- -40 °C +100°C working temprature



DM JUNCTION BOX -Carbon Steel



Description:

Wall-Mounted, Indoor Enclosure - With Mounting Panel
Left hand hinged single door (reverse is possible) , 1/4 turn latch with screwdriver insert
Wall mounting holes with riv-nut
Standards Compliance: UL 50E / IEC 62208

Protection Ratings:

Protection Ratings: UL/cUL Type 1, 3R, 12, 4 UL File Number E352599 / IP66 (IEC 60 529)
Corrosion Resistance: C3-M according to EN ISO 12944-2
Impact Protection: IK10 according to IEC EN 60529

Materials:

Enclosure, Door: DC-01 Carbon Steel
Mounting Panel: DX51 Galvanized Steel

Surface Finish:

Enclosure, Door: Nano coating primed, RAL 7035 Light Gray with textured powder coated

Supply Includes:

Enclosure with wall mounting holes, Door , Mounting Panel

Options:

Wall brackets, grounding cables, and other accessories

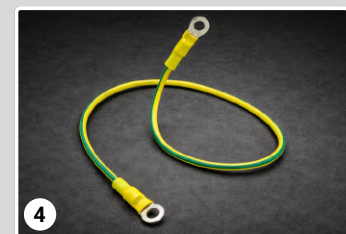
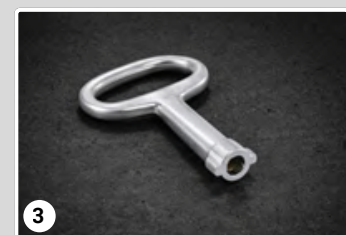


DM JUNCTION BOX - Carbon Steel

DM Junction Box Enclosures - Carbon Steel (mounting panel included)

Product Code	No. of Door(s)	Size HxWxD (Inch)			Size HxWxD (mm)			M.Panel Size HxW (Inch)		M.Panel Size HxW (mm)	
DM U232.201	1	7.9	7.9	5.9	200	200	150	7.3	6.9	185	175
DM U232.251	1	9.8	7.9	5.9	250	200	150	9.3	6.9	235	175
DM U232.215	1	9.8	9.8	5.9	250	250	150	9.3	8.9	235	225
DM U232.315	1	11.8	9.8	5.9	300	250	150	11.2	8.9	285	225
DM U233.315	1	11.8	11.8	5.9	300	300	150	11.2	10.8	285	275

Accessories - DM Junction Box Enclosures



	Product Code	Description
1	971.300	Wallmount Brackets , PU:4
2	951.260	5,00 mm doublebit insert for 1/4 turn latches , PU:1
2	951.263	Slotted screwdriver insert for 1/4 turn latches , PU:1
3	952.101	5,00 mm Double-bit Key , PU:1
4	991.208	Ground Strap M8 -16mm² Yellow-Green 210mm(8.26") ,PU:5
4	991.209	Ground Strap M8 -16mm² Yellow-Green 260mm(10.23") , PU:5
4	991.210	Ground Strap M8 -16mm² Yellow-Green 310mm(12.20") , PU:5
5	991.200	Grounding Braid M6 - 12x3x163mm (0.59"x0.12") , PU:10
5	991.201	Grounding Braid M6 - 12x3x260mm (0.59"x0.12") , PU:10

DM WALL MOUNTED ENCLOSURE - Single Door - Carbon Steel



Description:

Wall-Mount / Freestanding with Plinth – Indoor / Outdoor Option (a)
Single Door , Mounting panel included , Wall mounting holes with riv-nut
Standards Compliance: UL 50E and IEC 62208



Protection Ratings

Protection Ratings: UL/cUL Type 1, 3R, 12, 4 - UL File Number E352599 / IP66 (IEC 60 529)
Corrosion Resistance: C3-M according to EN ISO 12944-2
Impact Protection: IK10 according to IEC EN 60529

Door Types:

130° left hand hinged door (reverse is possible) , one 1/4 turn latch with screwdriver insert (Door Type A)
130° left hand hinged door (reverse is possible) , two 1/4 turn latches with screwdriver insert (Door Type B , C)
130° left hand hinged door (reverse is possible) , 3-point latching tool-to-open swing handle with screwdriver insert (Door Type D)

Materials:

Enclosure, Door: DC-01 Carbon Steel
Mounting Panel: DX51 Galvanized Steel

Surface Finish:

Enclosure, Door: Nano coating primed, RAL 7035 Light Gray with textured powder coated

Supply Includes:

Enclosure with wall mounting holes, Door , Mounting Panel

Options:

Wall brackets, grounding cables, and other accessories

(a): For outdoor applications, an Outdoor Canopy is required. Installation locations must comply with C3-M corrosion level according to EN ISO 12944-2

DM JUNCTION BOX - Carbon Steel

DM Wall Mounted Enclosures - Single Door -Carbon Steel (mounting panel included)



A



B



C



D

Product Code	Door(s) Type	Size HxWxD (Inch)			Size HxWxD (mm)			M.Panel Size HxW (Inch)		M.Panel Size HxW (mm)	
DM U252.321	A	11.8	9.8	8.3	300	250	210	10.8	7.9	275	200
DM U253.315	A	11.8	11.8	5.9	300	300	150	10.8	9.8	275	250
DM U253.415	A	15.7	11.8	5.9	400	300	150	14.8	9.8	375	250
DM U253.421	A	15.7	11.8	8.3	400	300	210	14.8	9.8	375	250
DM U254.421	A	15.7	15.7	8.3	400	400	210	14.8	13.8	375	350
DM U254.515	B	19.7	15.7	5.9	500	400	150	18.7	13.8	475	350
DM U254.521	B	19.7	15.7	8.3	500	400	210	18.7	13.8	475	350
DM U255.521	B	19.7	19.7	8.3	500	500	210	18.7	17.7	475	450
DM U255.530	B	19.7	19.7	11.8	500	500	300	18.7	17.7	475	450
DM U254.621	B	23.6	15.7	8.3	600	400	210	22.6	13.8	575	350
DM U254.626	B	23.6	15.7	10.2	600	400	260	22.6	13.8	575	350
DM U255.621	B	23.6	19.7	8.3	600	500	210	22.6	17.7	575	450
DM U255.626	B	23.6	19.7	10.2	600	500	260	22.6	17.7	575	450
DM U256.621	B	23.6	23.6	8.3	600	600	210	22.6	21.7	575	550
DM U256.630	B	23.6	23.6	11.8	600	600	300	22.6	21.7	575	550
DM U255.721	B	27.6	19.7	8.3	700	500	210	26.6	17.7	675	450
DM U256.821	B	31.5	23.6	8.3	800	600	210	30.5	21.7	775	550
DM U256.826	B	31.5	23.6	10.2	800	600	260	30.5	21.7	775	550
DM U256.830	B	31.5	23.6	11.8	800	600	300	30.5	21.7	775	550
DM U258.821	B	31.5	31.5	8.3	800	800	210	30.5	29.5	775	750
DM U258.830	B	31.5	31.5	11.8	800	800	300	30.5	29.5	775	750
DM U256.126	C	39.4	23.6	10.2	1000	600	260	38.4	21.7	975	550
DM U256.130	C	39.4	23.6	11.8	1000	600	300	38.4	21.7	975	550
DM U258.126	C	39.4	31.5	10.2	1000	800	260	38.4	29.5	975	750
DM U258.130	C	39.4	31.5	11.8	1000	800	300	38.4	29.5	975	750
DM U248.140	C	39.4	31.5	15.7	1000	800	400	38.4	29.5	975	750
DM U256.123	D	47.2	23.6	11.8	1200	600	300	46.3	21.7	1175	550
DM U258.123	D	47.2	31.5	11.8	1200	800	300	46.3	29.5	1175	750
DM U248.124	D	47.2	31.5	15.7	1200	800	400	46.3	29.5	1175	750

DM WALL MOUNTED ENCLOSURE - Double Door - Carbon Steel



Description:

Wall-Mount / Freestanding with Plinth – Indoor Enclosure
Double Door, Mounting panel included, Wall mounting holes with riv-nut
Standards Compliance: UL 50E and IEC 62208



Protection Ratings:

Protection Ratings: UL/cUL Type 1, 12 - UL File Number E352599 / IP54 (IEC 60 529)
Corrosion Resistance: C3-M according to EN ISO 12944-2
Impact Protection: IK10 according to IEC EN 60529

Door Types:

130° left-right hand hinged double doors , four 1/4 turn latches with screwdriver insert (Door Type E)
130° right hand hinged double doors , 3-point latching tool-to-open swing handle with screwdriver insert ,
2-point latching tool with inner handle to open left door (Door Type F)

Materials:

Enclosure, Doors: DC-01 Carbon Steel
Mounting Panel: DX51 Galvanized Steel

Surface Finish:

Enclosure, Doors: Nano coating primed, RAL 7035 Light Gray with textured powder coated

Supply Includes:

Enclosure with wall mounting holes, Double Doors , Mounting Panel

Options:

Wall brackets, grounding cables, and other accessories

DM WALL MOUNTED ENCLOSURE - Double Door - Carbon Steel

DM Wall Mounted Enclosures - Double Door -Carbon Steel (mounting panel included)



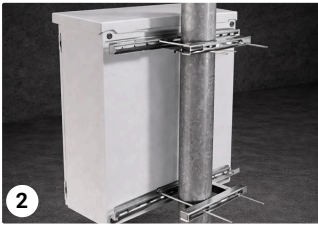
E



F

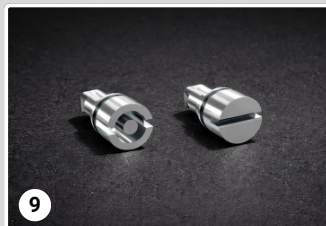
Product Code	Door(s) Type	Size HxWxD (Inch)			Size HxWxD (mm)			M.Panel Size HxW (Inch)		M.Panel Size HxW (mm)	
		H	W	D	H	W	D	H	W	H	W
DM U241.130	E	39.4	39.4	11.8	1000	1000	300	38.4	37.4	975	950
DM U241.123	F	47.2	39.4	11.8	1200	1000	300	46.3	37.4	1175	950
DM U241.230	F	47.2	47.2	11.8	1200	1200	300	46.3	45.3	1175	1150
DM U241.140	F	47.2	47.2	15.7	1200	1200	400	46.3	45.3	1175	1150
DM U241.143	F	55.1	39.4	11.8	1400	1000	300	54.1	37.4	1375	950
DM U241.144	F	55.1	39.4	15.7	1400	1000	400	54.1	37.4	1375	950

ACCESSORIES - DM WALL MOUNTED ENCLOSURE



	Product Code	Description
1	971.300	Wallmount Brackets , PU:4
2	973.003	Pole Clamp for DM W:300mm (11.8")
2	973.004	Pole Clamp for DM W:400mm (15.7")
2	973.005	Pole Clamp for DM W:500mm (19.7")
2	973.006	Pole Clamp for DM W:600mm (23.6")
3	973.042	DM Rain Canopy , WD : 400x210mm (15.7"x 8.3")
3	973.052	DM Rain Canopy , WD : 500Wx210D (19.7"x 8.3")
3	973.062	DM Rain Canopy , WD : 600Wx210D (23.6"x 8.3")
3	973.063	DM Rain Canopy , WD : 600Wx300D (23.6"x 11.8")
3	973.083	DM Rain Canopy , WD : 800Wx300D (31.5"x 11.8")
4	983.121	Air Filter with Rain Canopy , Filter :150x150mm
4	983.122	Air Filter with Rain Canopy , Filter :250x250mm
4	983.125	Rain Canopy for Air Filter ,WH:460mmx500mm, without filter
5	975.034	Swing Panel HW: 400x300mm (15.7"x 11.8")
5	975.044	Swing Panel HW: 400x400mm (15.7"x 15.7")
5	975.045	Swing Panel HW: 500x400mm (19.7"x 15.7")
5	975.046	Swing Panel HW: 600x400mm (23.6"x 15.7")
5	975.068	Swing Panel HW: 800x600mm (31.5"x 23.6")
5	975.610	Swing Panel HW: 1000x600mm (39.4"x 23.6")
5	975.810	Swing Panel HW: 1000x800mm (39.4"x 31.5")
5	975.812	Swing Panel HW: 1200x800mm (47.2"x 31.5")
6	973.442	Metal Plan Pocket W: 400,500,1000mm (15.7",19.7",39.4")
6	973.542	Metal Plan Pocket W: 600,1200mm (23.6",47.2")
6	973.742	Metal Plan Pocket W: 800mm (31.5")
7	973.142	Door Stop for DM
8	973.110	Window Kit , WHD: 210mm(8.26")x210mm(8.26")x75mm(2.95")
8	973.112	Window Kit , WHD: 355mm(13.97")x300mm(11.8")x75mm(2.95")
8	973.114	Window Kit , WHD: 410mm(16.14")x560mm(22.04")x75mm(2.95")

ACCESSORIES - DM WALL MOUNTED ENCLOSURE



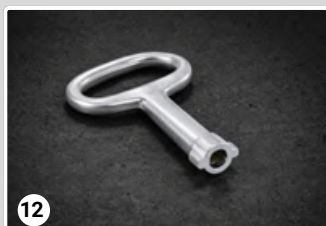
9



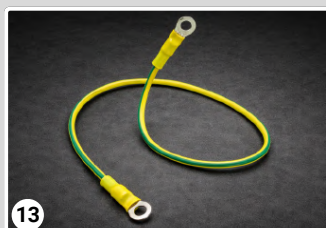
10



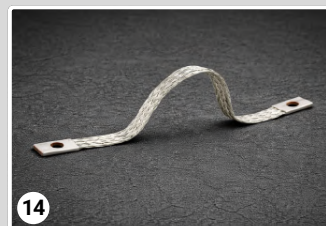
11



12



13



14

	Product Code	Description
9	951.260	5 mm doublebit insert for 1/4 turn latches
9	951.263	Slotted screwdriver insert for 1/4 turn latches
10	950.203	Swing Handle with 5mm double-bit inser
10	950.204	Swing Handle with screwdriver insert
11	950.210	T Handle with key-locking(5333) for DM
12	952.101	5,00 mm Double-bit Key
13	991.208	Ground Strap M8 -16mm ² Yellow-Green 210mm(8.26") ,PU:5
13	991.209	Ground Strap M8 -16mm ² Yellow-Green 260mm(10.23") ,PU:5
13	991.210	Ground Strap M8 -16mm ² Yellow-Green 310mm(12.20") ,PU:5
14	991.200	Grounding Braid M6 - 12x3x163mm (0.59"x0.12") , PU:10
14	991.201	Grounding Braid M6 - 12x3x260mm (0.59"x0.12") , PU:10

IP & NEMA ENCLOSURE RATINGS

		INDOOR USE					OUTDOOR USE									
		IP20	IP22	IP53	IP54		IP24		IP55				IP66		IP67	IP68
		NEMA 1	NEMA 2	NEMA 5	NEMA 12/12 K	NEMA 13	NEMA 3R	NEMA 3RX	NEMA 3	NEMA 3X	NEMA 3S	NEMA 3SX	NEMA 4	NEMA 4X	NEMA 6	NEMA 6P
SOLIDS	Incidental Contact	●	●	●	●	●	●	●	●	●	●	●	●	●	●	●
	Falling Dirt	●	●		●	●	●	●	●	●	●	●	●	●	●	●
	Circulating Dust				●	●							●	●	●	●
	Settling Airborne Dust			●	●	●							●	●	●	●
	Windblown Dust								●	●	●	●				
	Lint			●	●	●										
	Fibers			●	●	●										
	Flyings			●	●	●										
LIQUIDS	Falling Rain						●	●	●	●	●	●	●	●	●	●
	Wind-driven Rain							●	●	●	●	●	●	●	●	●
	Snow						●	●	●	●	●	●	●	●	●	●
	Sleet						●	●	●	●	●	●	●	●	●	●
	Ice Laden									●						
	Splashing Water												●	●	●	●
	Hose-directed Water												●	●	●	●
	Temporary Submersion														●	●
	Prolonged Submersion															●
CHEMICALS	Seepage of Non-corrosive Liquids				●	●										
	Spraying Non-corrosive Liquids					●										
	Corrosion						●		●		●		●			●

TEKPAN Products for Harsh Environments



Company Management
System Approval



Canadian and US Standards
and Approval



IEC Product Standards
and Approval



European Standards and
Compliance

TEKPAN CANADA INC.

29 Goertz Ave Stony Plain, Edmonton-Alberta T7Z 0H6 - CANADA

Phone: 780-722-9280 **E-Mail:** info@tekpan.ca **Web:** www.tekpan.ca

